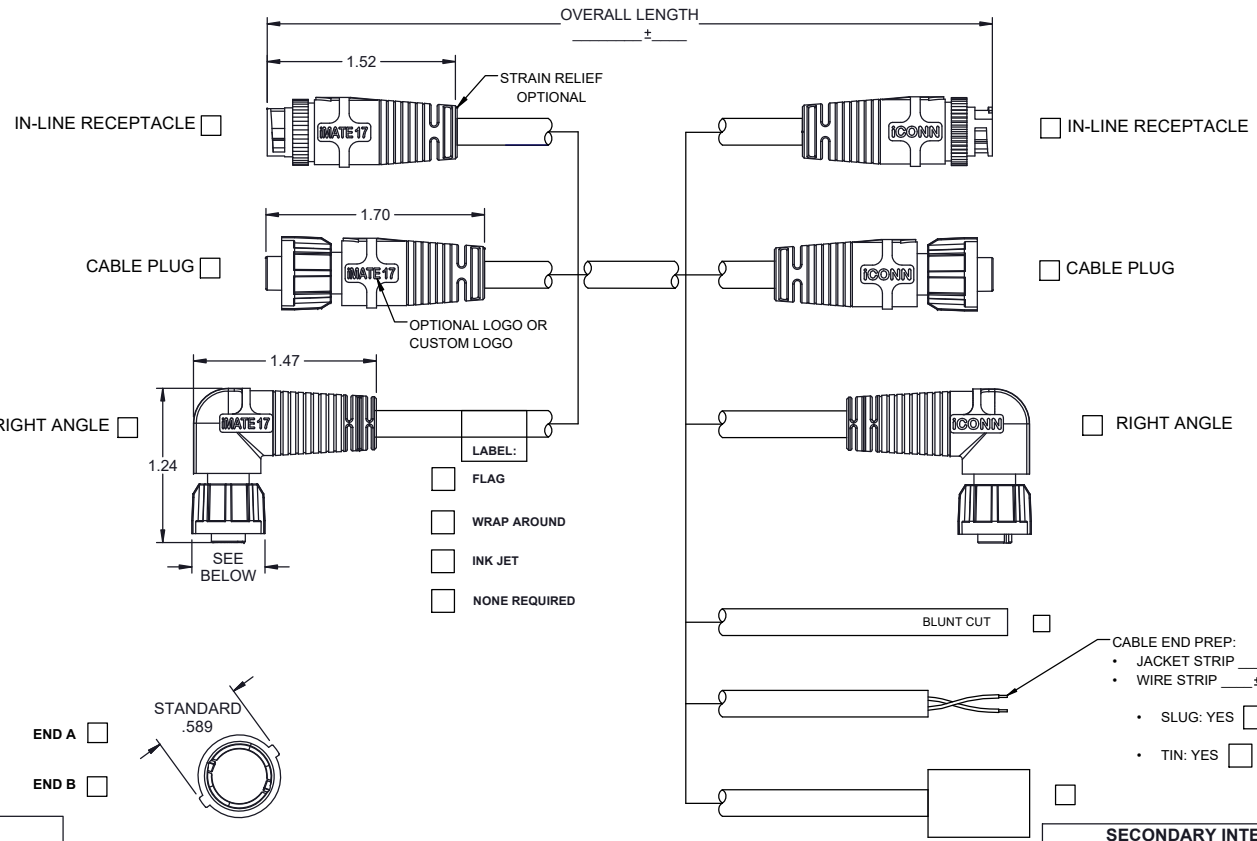


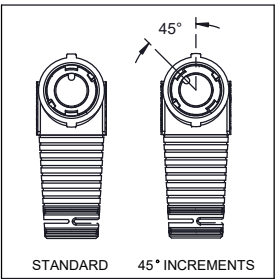
A B C D E F G H I J

STANDARD TOLERANCES	
OVERALL LENGTH	TOLERANCE
< 6"	+/- .25"
6" - 11"	+/- .50"
11" - 23"	+/- 1"
2.00' - 7.99'	+/- 2"
8.00' - 10.99'	+/- 3"
11.00' - 19.99'	+/- 4"
20.00' - 25.99'	+/- 6"
26.00' - 50.99'	+/- 8"
51.00' - 75.99'	+/- 10"
76.00' - 100.00'	+/- 12"
> 100.00'	+/- 1%

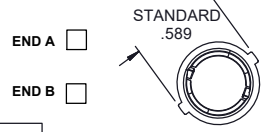
NOTE: TIGHTER TOLERANCES MAY REQUIRE SPECIAL FIXTURING AT ADDITIONAL COST



RIGHT ANGLE KEY ORIENTATION (FACE VIEW)



- LABEL:
- FLAG
- WRAP AROUND
- INK JET
- NONE REQUIRED



- CABLE END PREP:
- JACKET STRIP  $\pm$
  - WIRE STRIP  $\pm$
  - SLUG: YES  NO
  - TIN: YES  NO

SECONDARY INTERCONNECTION	
MFG	P/N

**CABLE SPECIFICATION**

CABLE MFG / PART #:

**FILL OUT BELOW IF NO CABLE MFG OR PART #:**

JACKET COLOR:

JACKET MATERIAL:

CONDUCTOR SIZE:

STRANDING:

TINNED/BARE:

# OF CONDUCTORS:

CONDUCTOR INSULATION:

SHIELD:

DRAIN:

VOLTS:

UL:

CSA:

OTHER:

**SPECIAL REQUIREMENTS / LABEL INFO:**

**OVERMOLD:**

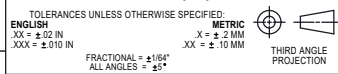
OVERMOLD MATERIAL: \_\_\_\_\_ I.P. RATING: \_\_\_\_\_

OVERMOLD COLOR: \_\_\_\_\_ UV RESIST: - YES / NO

**PACKAGING SPECS:**

- IF LENGTH IS < 3FT. CABLE IS BUNDLED
- IF LENGTH IS > 3FT. CABLE IS COILED WITH I.D. =5" (UNLESS OTHERWISE SPECIFIED)
- MISC:

ALL DIMENSIONS ARE SPECIFIED IN:



**CONFIDENTIALITY NOTICE**

THIS DRAWING CONTAINS CONFIDENTIAL INFORMATION AND IS SUPPLIED BY ICONN SYSTEMS, LLC. THE OWNER OF SUCH INFORMATION, IN ACCEPTING THIS DRAWING, THE USER AGREES THAT IT IS FOR THE USER'S SOLE USE, THAT IT WILL NOT BE REPRODUCED OR DISTRIBUTED TO OTHERS, AND THAT THE INFORMATION CONTAINED THEREIN WILL NOT BE USED IN ANY MANNER DETRIMENTAL TO ICONN SYSTEMS.

DESIGNED BY: M. CORTESE DATE: 02-01-22

DESIGN APPROVED BY: R. SMITH DATE: 03-11-22

DRAFTED BY: M. CORTESE DATE: 02-01-22

CHECKED BY: R. SMITH DATE: 03-11-22



**I-MATE 17 SALES OPTIONS**

SIZE: <b>B</b>	DO NOT SCALE THIS DRAWING	DRAWING SCALE: <b>8:1</b>	DRAWING NUMBER: <b>I-MATE 17 TEMPLATE</b>	REV: <b>A</b>
DRAWING TYPE: SALES			SHEET: 1 OF 2	

WIRING TABLE LEGEND:  
N/T = NOT TERMINATED, N/C = NO CONTACT, M/C = MOLDED CLOSED

# PLUG FACE VIEWS\*

20 AWG CONTACTS	2 POLE (PIN / SOCKET)	3 POLE (PIN / SOCKET)				
END A/B						
PIN/SOCKET						
22 AWG CONTACTS	4 POLE (PIN ONLY)	5 POLE (SOCKET ONLY)	6 POLE (SOCKET ONLY)	7 POLE (SOCKET ONLY)		
END A/B						
PIN/SOCKET						

\*NOTE - INLINE PINOUTS ARE MIRRORED

## ACCESSORIES / COLORS:

- SEALING CAP/COVER
- SECONDARY SEAL (INLINE ONLY)
- TERMINATOR PLUG (NO CABLE)
- COUPLING RING COLORS:
  - BLACK (STANDARD)
  - BLUE
  - RED
  - GREY

WIRE COLOR CODE END "A"						
1	2	3	4	5	6	7
WIRE COLOR CODE END "B"						
1	2	3	4	5	6	7

WIRING TABLE LEGEND:  
N/T = NOT TERMINATED, N/C = NO CONTACT, M/C = MOLDED CLOSED

## CONNECTOR CHECKLIST: PAGE 1

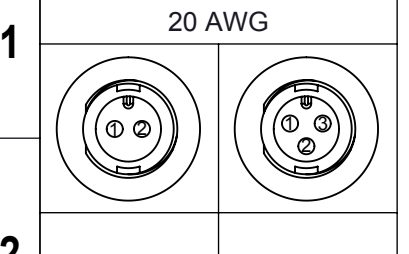
- END A STYLE SELECTION
- END B STYLE SELECTION
- LABEL
- STRIP/TIN/SLUG
- OTHER INTERCONNECT
- COUPLING RING STYLE
- CABLE SPECIFICATIONS
- OVERMOLD MATERIAL / COLOR / UV

## PAGE 2

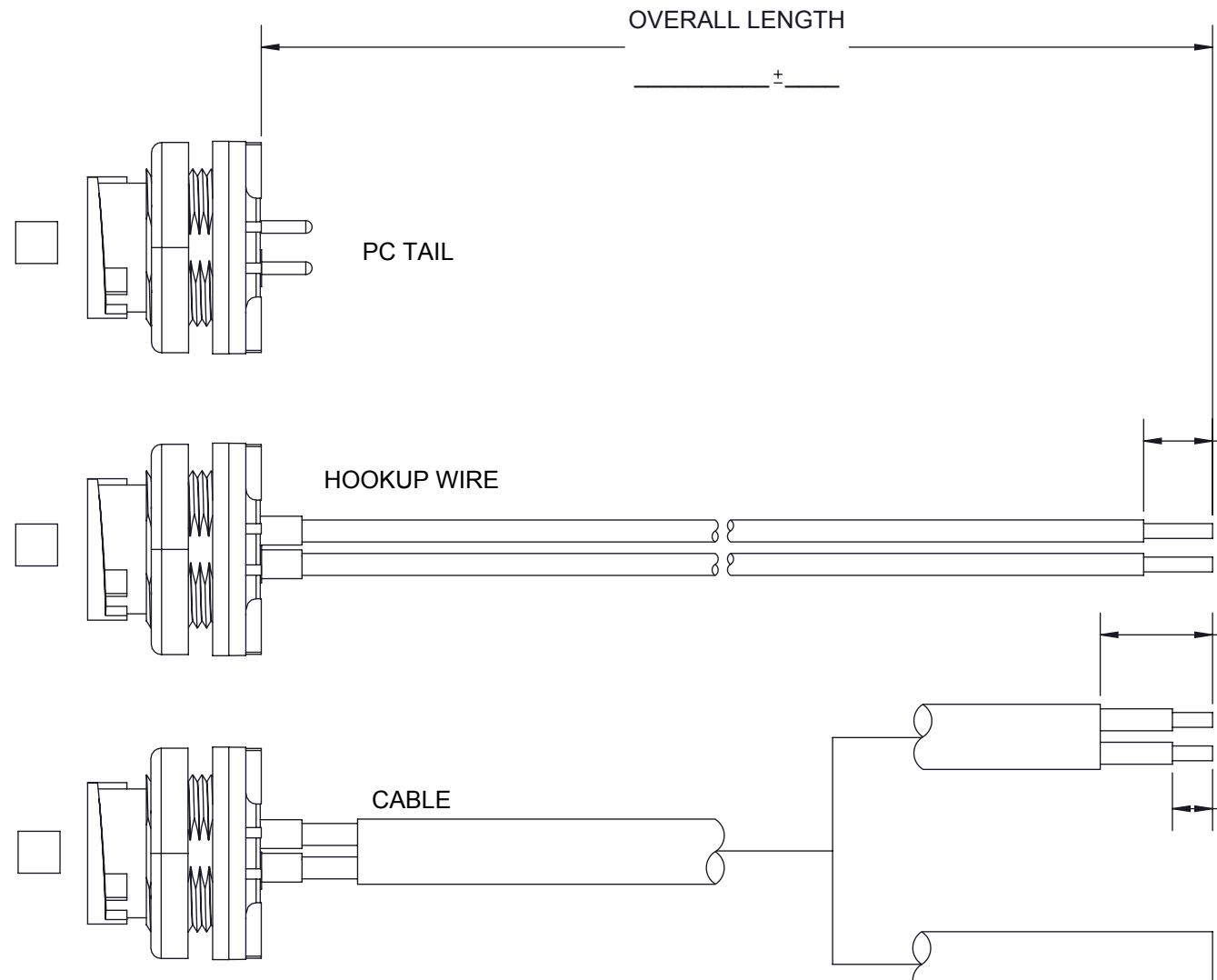
- END A PINOUT
- END A GENDER
- END B PINOUT (IF APPLICABLE)
- END B GENDER (IF APPLICABLE)
- WIRING TABLE
- ACCESSORIES/COLORS

ALL DIMENSIONS ARE SPECIFIED IN: IN [MM] TOLERANCES UNLESS OTHERWISE SPECIFIED: ENGLISH XX = ±.02 IN XXX = ±.010 IN METRIC X = ±.2 MM XX = ±.10 MM FRACTIONAL = ±1/64" ALL ANGLES = ±5° THIRD ANGLE PROJECTION		DESIGNED BY: M. CORTESE DATE: 02-01-22 DESIGN APPROVED BY: R. SMITH DATE: 03-11-22 DRAFTED BY: M. CORTESE DATE: 02-01-22 CHECKED BY: R. SMITH DATE: 03-11-22	an R2M co. SYSTEMS, LLC 1110 N. GARFIELD ST. LOMBARD, IL 60148 TEL: (630) 927-6006 FAX: (630) 927-6006 ICONNSYSTEMS.COM
<b>CONFIDENTIALITY NOTICE</b> THIS DRAWING CONTAINS CONFIDENTIAL INFORMATION AND IS SUPPLIED BY ICONN SYSTEMS, LLC. THE OWNER OF SUCH INFORMATION, IN ACCEPTING THIS DRAWING, THE USER AGREES THAT IT IS FOR THE USER'S SOLE USE, THAT IT WILL NOT BE REPRODUCED OR DISTRIBUTED TO OTHERS, AND THAT THE INFORMATION CONTAINED THEREIN WILL NOT BE USED IN ANY MANNER DETRIMENTAL TO ICONN SYSTEMS.		DRAWING TITLE: <b>IMATE 17 SALES OPTIONS</b> DRAWING NUMBER: <b>IMATE 17 TEMPLATE</b> DRAWING TYPE: SALES SHEET: 2 OF 2	REV. <b>A</b>
SIZE <b>B</b> DO NOT SCALE THIS DRAWING	DRAWING SCALE: <b>8:1</b>		

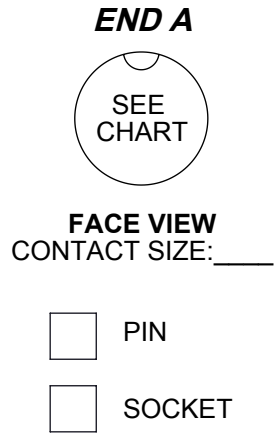
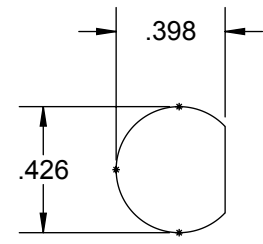
A B C D E F G H I J



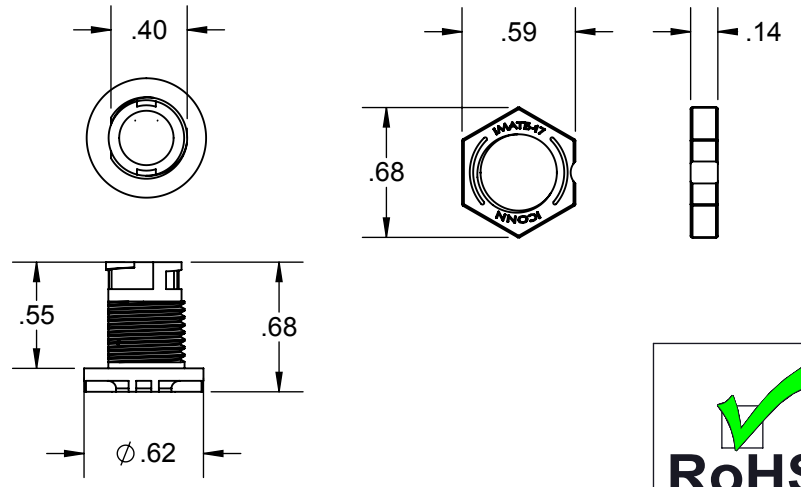
- NOTES:**
- 3/16" MAX MOUNTING PANEL THICKNESS
  - MATERIALS:**
    - NSERT: GE VALOX 420 SEO PBT 30% GF PBT, UL94V0,
    - BLACK GASKET: NEOPRENE RUBBER 60 5 DUROMETER
    - JAM NUT: GE VALOX 420 SEO PBT 30% GF, UL94V0, BLACK
  - PRODUCT PERFORMANCE:**
    - SEALING: UP TO IP68 RATING
    - VOLTAGE: UP TO 600V
    - AMP CAPACITY: 7.5A / 20AWG, 5A / 22 AWG



**RECOMMENDED MOUNTING HOLE**



7	CABLE MFG:
7	PART #:
7	JACKET COLOR:
7	JACKET MATERIAL:
7	CONDUCTOR SIZE:
7	STRANDING:
7	TINNED/BARE:
8	# OF CONDUCTORS:
8	CONDUCTOR INSULATION:
8	SHIELD:
8	DRAIN:
8	VOLTS:
9	UL:
9	CSA:
9	OTHER:



**REQUIRED SECONDARY INTERCONNECTIONS:**

ALL DIMENSIONS ARE SPECIFIED IN:  
IN [MM]

TOLERANCES UNLESS OTHERWISE SPECIFIED:  
ENGLISH .XX = ±.02 IN .XXX = ±.010 IN  
METRIC .X = ±.5 MM .XX = ±.25 MM

FRACTIONAL = ±1/32" ALL ANGLES = ±10°

THIRD ANGLE PROJECTION

DESIGNED BY:	J.REGOLE	DATE:	5-8-10
DESIGN APPROVED BY:	T.CZYZ	DATE:	7-3-10
DRAFTED BY:	J.REGOLE	DATE:	1-8-15
CHECKED BY:	J.JEFFERY	DATE:	1-8-15

**iconn** an R2M co. SYSTEMS, LLC  
1110 N. GARFIELD ST. LOMBARD, IL 60148  
TEL: (630) 827-6000 FAX: (630) 827-6006  
[ICONNSYSTEMS.COM](http://ICONNSYSTEMS.COM)

**DRAWING TITLE:**  
**IMATE 17 PANEL RECEPTACLE SALES OPTIONS**

**CONFIDENTIALITY NOTICE**

THIS DRAWING CONTAINS CONFIDENTIAL INFORMATION AND IS SUPPLIED BY ICONN SYSTEMS, LLC, THE OWNER OF SUCH INFORMATION. IN ACCEPTING THIS DRAWING, THE USER AGREES THAT IT IS FOR THE USER'S SOLE USE, THAT IT WILL NOT BE REPRODUCED OR DISTRIBUTED TO OTHERS, AND THAT THE INFORMATION CONTAINED THEREIN WILL NOT BE USED IN ANY MANNER DETRIMENTAL TO ICONN SYSTEMS.

SIZE	<b>B</b>	DO NOT SCALE THIS DRAWING	DRAWING SCALE:	<b>1:1</b>
------	----------	---------------------------	----------------	------------

DRAWING NUMBER:	<b>IMATE 17 PANEL RECEPTACLE TEMPLATE</b>	REV.	<b>A</b>
DRAWING TYPE:	<b>SALES</b>	SHEET:	<b>1 OF 1</b>



**END A WIRING TABLE**

POSITION	1	2
COLOR		

WIRING TABLE LEGEND:  
N/T = NOT TERMINATED, N/C = NO CONTACT, M/C = MOLDED CLOSED