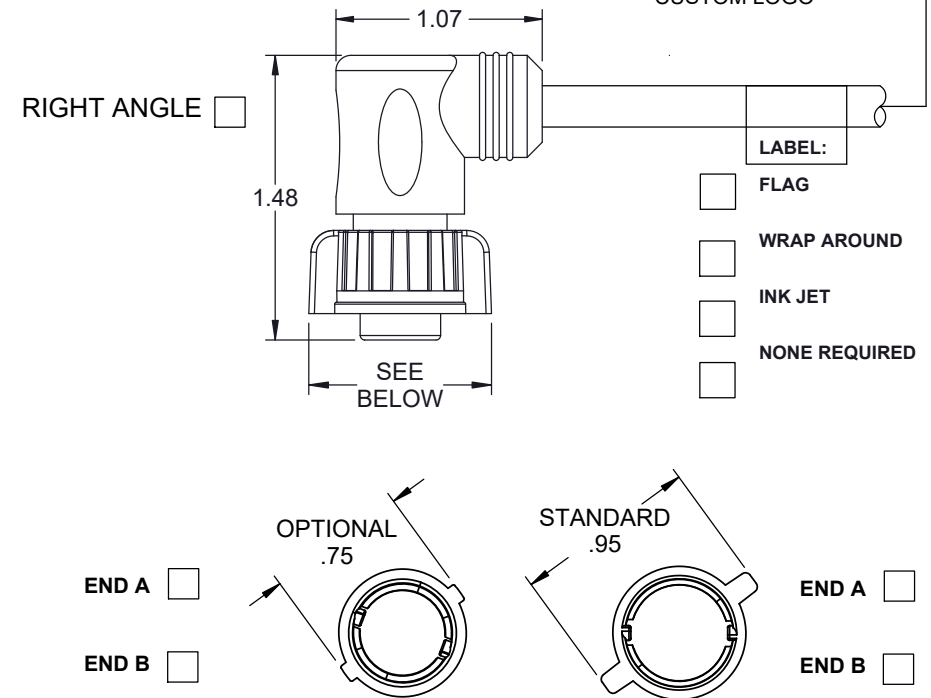
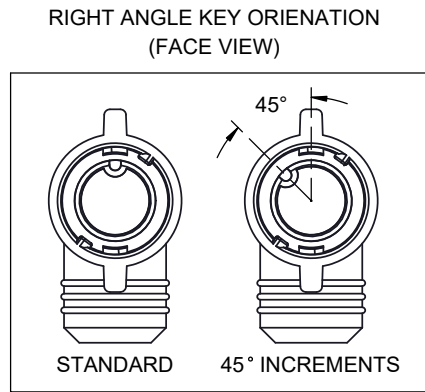
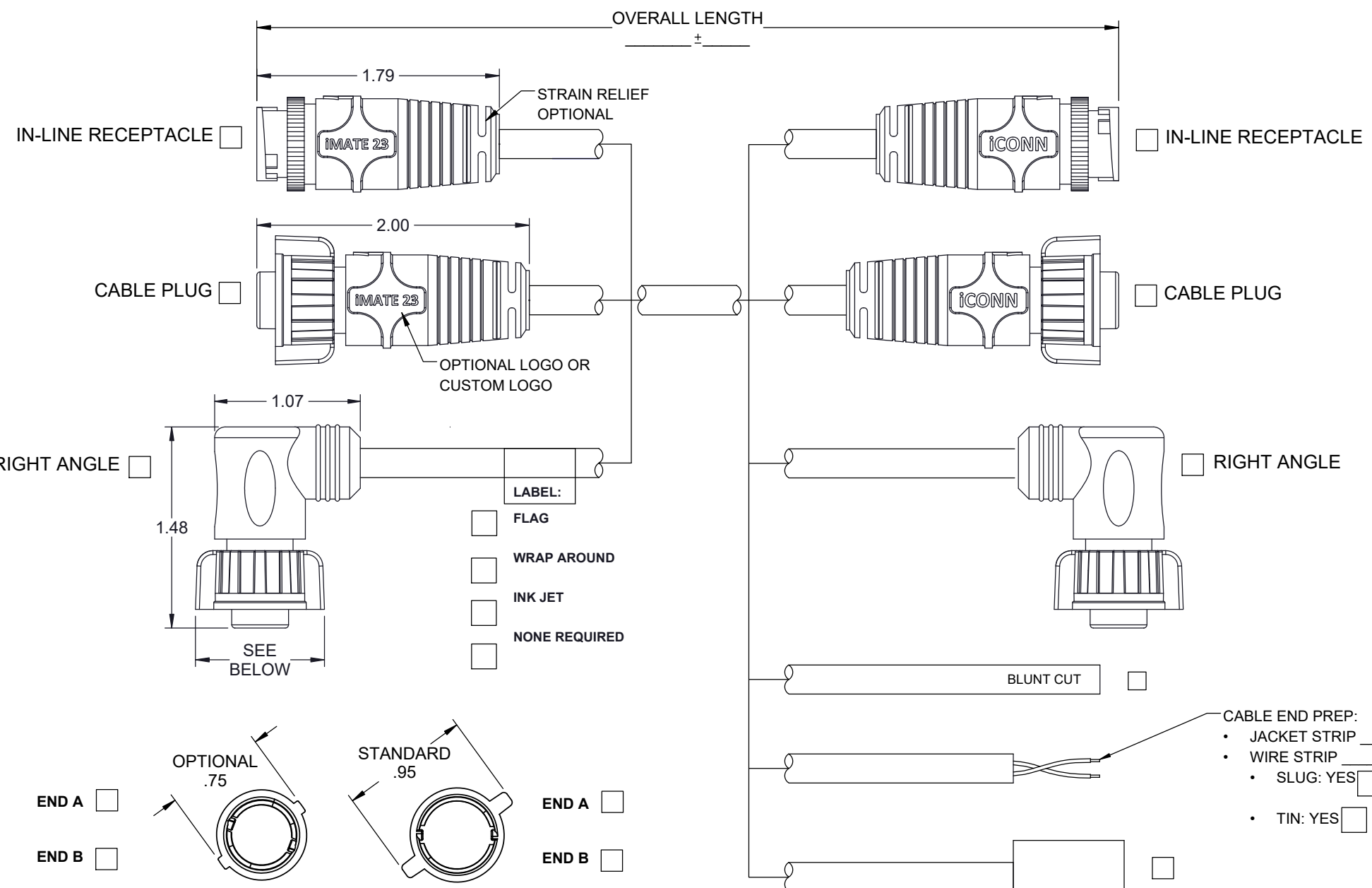


STANDARD TOLERANCES	
OVERALL LENGTH	TOLERANCE
< 6"	+/- .25"
6" - 11"	+/- .50"
11" - 23"	+/- 1"
2.00' - 7.99'	+/- 2"
8.00' - 10.99'	+/- 3"
11.00' - 19.99'	+/- 4"
20.00' - 25.99'	+/- 6"
26.00' - 50.99'	+/- 8"
51.00' - 75.99'	+/- 10"
76.00' - 100.00'	+/- 12"
> 100.00'	+/- 1%

NOTE: TIGHTER TOLERANCES MAY REQUIRE SPECIAL FIXTURING AT ADDITIONAL COST



SECONDARY INTERCONNECTION	
MFG	P/N

CABLE SPECIFICATION

CABLE MFG / PART #:

FILL OUT BELOW IF NO CABLE MFG OR PART #:

JACKET COLOR:

JACKET MATERIAL:

CONDUCTOR SIZE:

STRANDING:

TINNED/BARE:

OF CONDUCTORS:

CONDUCTOR INSULATION:

SHIELD:

DRAIN:

VOLTS:

UL:

CSA:

OTHER:

SPECIAL REQUIREMENTS / LABEL INFO:

OVERMOLD:

OVERMOLD MATERIAL: _____ I.P. RATING: _____

OVERMOLD COLOR: _____ UV RESIST: - YES / NO

PACKAGING SPECS:

- IF LENGTH IS < 3FT. CABLE IS BUNDLED
- IF LENGTH IS > 3FT. CABLE IS COILED WITH I.D. =5" (UNLESS OTHERWISE SPECIFIED)
- MISC:

ALL DIMENSIONS ARE SPECIFIED IN:

IN [MM]

TOLERANCES UNLESS OTHERWISE SPECIFIED:

ENGLISH .XX = ±.02 IN .XXX = ±.010 IN

METRIC .X = ± .2 MM .XX = ± .10 MM

FRACTIONAL = ±1/64" ALL ANGLES = ±5°

THIRD ANGLE PROJECTION

CONFIDENTIALITY NOTICE

THIS DRAWING CONTAINS CONFIDENTIAL INFORMATION AND IS SUPPLIED BY ICONN SYSTEMS, LLC. THE OWNER OF SUCH INFORMATION. IN ACCEPTING THIS DRAWING, THE USER AGREES THAT IT IS FOR THE USER'S SOLE USE, THAT IT WILL NOT BE REPRODUCED OR DISTRIBUTED TO OTHERS, AND THAT THE INFORMATION CONTAINED THEREIN WILL NOT BE USED IN ANY MANNER DETRIMENTAL TO ICONN SYSTEMS.

DESIGNED BY:	DATE:
M. CORTESE	02-01-22
DESIGN APPROVED BY:	DATE:
R. SMITH	03-11-22
DRAFTED BY:	DATE:
M. CORTESE	02-01-22
CHECKED BY:	DATE:
R. SMITH	03-11-22
SIZE	DRAWING SCALE:
B	8:1
DO NOT SCALE THIS DRAWING	

DRAWING TITLE:

I-MATE 23 SALES OPTIONS

DRAWING NUMBER:

I-MATE 23 TEMPLATE

DRAWING TYPE: SALES SHEET: 1 OF 2

REV. **C**

WIRING TABLE LEGEND:
N/T = NOT TERMINATED, N/C = NO CONTACT, M/C = MOLDED CLOSED

PLUG FACE VIEWS*

2	16 AWG CONTACTS	2 POLE (PIN / SOCKET) 	3 POLE (PIN / SOCKET) 	4 POLE (PIN / SOCKET) 	5 POLE (SOCKET ONLY) 							
	END A/B											
	PIN/SOCKET											
3	20 AWG CONTACTS	2 POLE (PIN / SOCKET) 	3 POLE (PIN / SOCKET) 	4 POLE (PIN / SOCKET) 	5 POLE (PIN / SOCKET) 	6 POLE (PIN / SOCKET) 	7 POLE (SOCKET ONLY) 	8 POLE (SOCKET ONLY) 				
	END A/B											
4	PIN/SOCKET											
5	22 AWG CONTACTS	9 POLE (SOCKET ONLY) 	10 POLE (SOCKET ONLY) 	11 POLE (SOCKET ONLY) 	12 POLE (SOCKET ONLY) 							
	END A/B											
	PIN/SOCKET											

*NOTE - INLINE PINOUTS ARE MIRRORED

ACCESSORIES / COLORS:

- SEALING CAP/COVER
- SECONDARY SEAL (INLINE ONLY)
- TERMINATOR PLUG (NO CABLE)
- COUPLING RING COLORS:
 - BLACK (STANDARD)
 - BLUE
 - RED
 - GREY

CONNECTOR CHECKLIST:

PAGE 1

- END A STYLE SELECTION
- END B STYLE SELECTION
- LABEL
- STRIP/TIN/SLUG
- OTHER INTERCONNECT
- COUPLING RING STYLE
- CABLE SPECIFICATIONS
- OVERMOLD MATERIAL / COLOR / UV

PAGE 2

- END A PINOUT
- END A GENDER
- END B PINOUT (IF APPLICABLE)
- END B GENDER (IF APPLICABLE)
- WIRING TABLE
- ACCESSORIES/COLORS

WIRE COLOR CODE END "A"

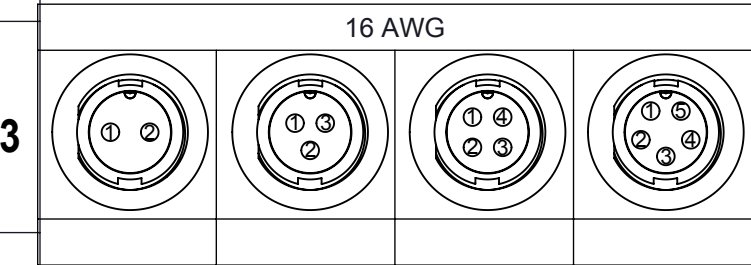
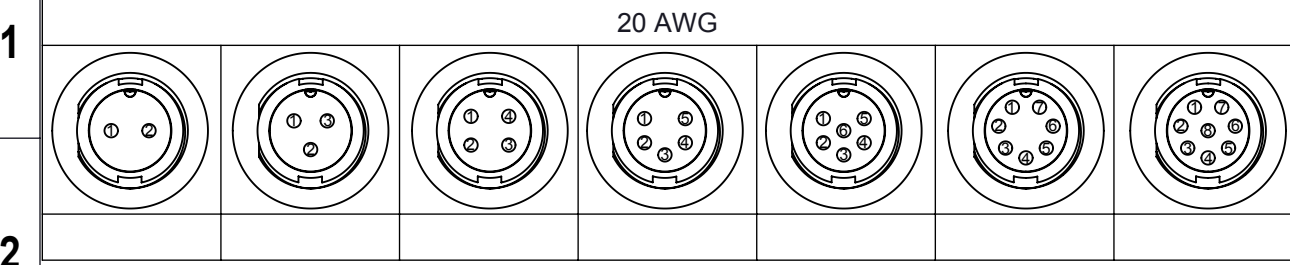
1	2	3	4	5	6	7	8	9	10	11	12
---	---	---	---	---	---	---	---	---	----	----	----

WIRE COLOR CODE END "B"

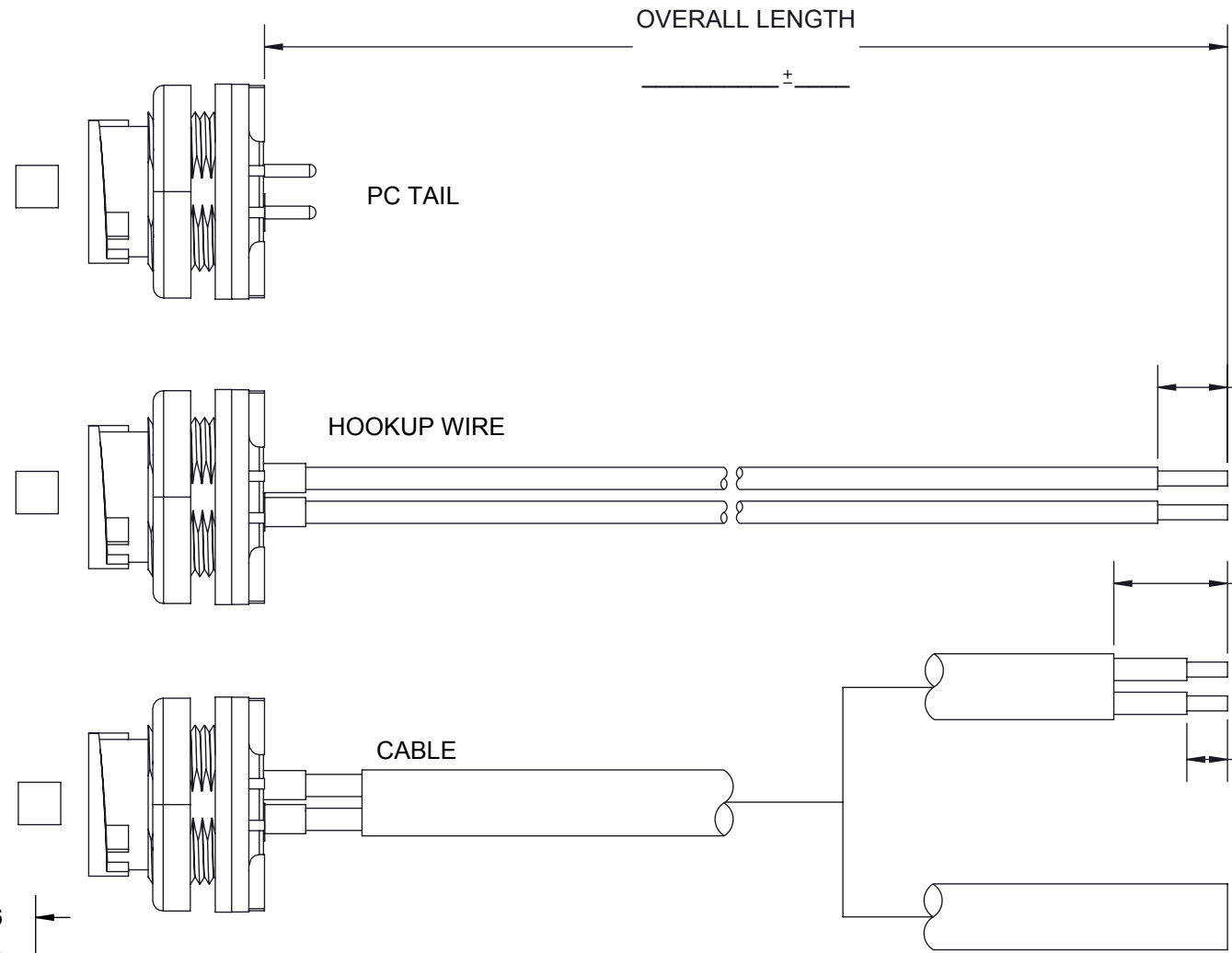
1	2	3	4	5	6	7	8	9	10	11	12
---	---	---	---	---	---	---	---	---	----	----	----

ALL DIMENSIONS ARE SPECIFIED IN: IN [MM] TOLERANCES UNLESS OTHERWISE SPECIFIED: ENGLISH .XX = ±.02 IN .XXX = ±.010 IN METRIC .X = ±.2 MM .XX = ±.10 MM FRACTIONAL = ±1/64" ALL ANGLES = ±5° 		DESIGNED BY: M. CORTESE DATE: 02-01-22 DESIGN APPROVED BY: R. SMITH DATE: 03-11-22 DRAFTED BY: M. CORTESE DATE: 02-01-22 CHECKED BY: R. SMITH DATE: 03-11-22	 1110 N. GARFIELD ST. LOMBARD, IL 60148 TEL: (630) 827-6000 FAX: (630) 827-6006 ICONNSYSTEMS.COM
CONFIDENTIALITY NOTICE THIS DRAWING CONTAINS CONFIDENTIAL INFORMATION AND IS SUPPLIED BY ICONN SYSTEMS, LLC. THE OWNER OF SUCH INFORMATION, IN ACCEPTING THIS DRAWING, THE USER AGREES THAT IT IS FOR THE USER'S SOLE USE, THAT IT WILL NOT BE REPRODUCED OR DISTRIBUTED TO OTHERS, AND THAT THE INFORMATION CONTAINED THEREIN WILL NOT BE USED IN ANY MANNER DETRIMENTAL TO ICONN SYSTEMS.		DRAWING TITLE: IMATE 23 SALES OPTIONS	DRAWING NUMBER: IMATE 23 TEMPLATE
SIZE: B	DO NOT SCALE THIS DRAWING	DRAWING SCALE: 8:1	REV. A
WIRING TABLE LEGEND: N/T = NOT TERMINATED, N/C = NO CONTACT, M/C = MOLDED CLOSED		DRAWING TYPE: SALES	SHEET: 2 OF 2

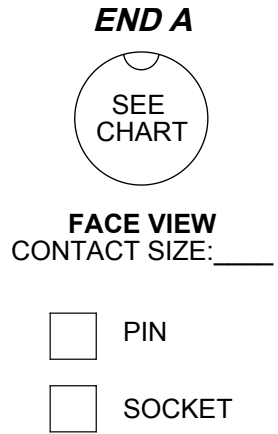
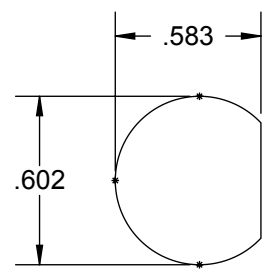
A B C D E F G H I J



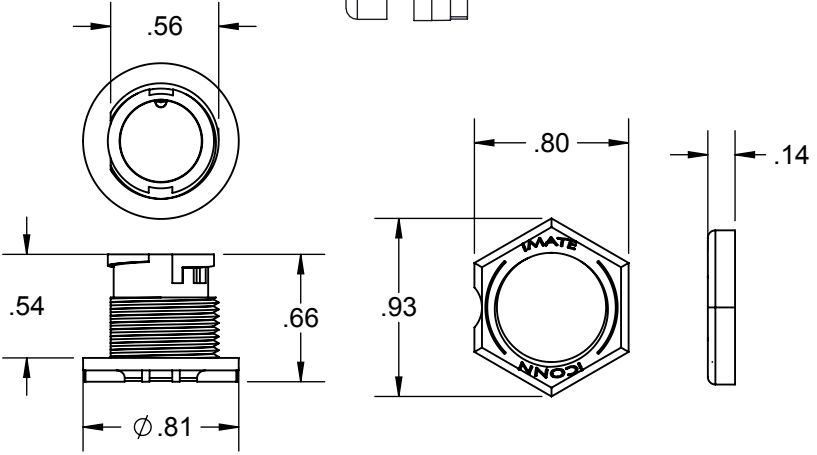
- NOTES:**
- 3/16" MAX MOUNTING PANEL THICKNESS
 - MATERIALS:**
 - NSERT: GE VALOX 420 SEO PBT 30% GF PBT, UL94V0,
 - BLACK GASKET: NEOPRENE RUBBER 60 5 DUROMETER
 - JAM NUT: GE VALOX 420 SEO PBT 30% GF, UL94V0, BLACK
 - PRODUCT PERFORMANCE:**
 - SEALING: UP TO IP68 RATING
 - VOLTAGE: UP TO 600V
 - AMP CAPACITY: 16A / 16AWG, 7.5A / 20AWG, 5A / 22 AWG



RECOMMENDED MOUNTING HOLE



CABLE MFG:	
PART #:	
JACKET COLOR:	
JACKET MATERIAL:	
CONDUCTOR SIZE:	
STRANDING:	
TINNED/BARE:	
# OF CONDUCTORS:	
CONDUCTOR INSULATION:	
SHIELD:	
DRAIN:	
VOLTS:	
UL:	
CSA:	
OTHER:	



REQUIRED SECONDARY INTERCONNECTIONS:

ALL DIMENSIONS ARE SPECIFIED IN:
IN [MM]

TOLERANCES UNLESS OTHERWISE SPECIFIED:
ENGLISH .XX = ±.02 IN .XXX = ±.010 IN
METRIC .X = ±.5 MM .XX = ±.25 MM

FRACTIONAL = ±1/32"
ALL ANGLES = ±10°

THIRD ANGLE PROJECTION

DESIGNED BY: J.REGOLE	DATE: 5-8-10
DESIGN APPROVED BY: T.CYZY	DATE: 7-3-10
DRAFTED BY: J.REGOLE	DATE: 1-8-15
CHECKED BY: J.JEFFERY	DATE: 1-8-15

iconn an R2M co.
SYSTEMS, LLC
1110 N. GARFIELD ST. LOMBARD, IL 60148
TEL: (630) 827-6000 FAX: (630) 827-6006
ICONNSYSTEMS.COM

END A WIRING TABLE

POSITION	1	2	3	4	5	6	7	8
COLOR								



CONFIDENTIALITY NOTICE

THIS DRAWING CONTAINS CONFIDENTIAL INFORMATION AND IS SUPPLIED BY ICONN SYSTEMS, LLC, THE OWNER OF SUCH INFORMATION. IN ACCEPTING THIS DRAWING, THE USER AGREES THAT IT IS FOR THE USER'S SOLE USE, THAT IT WILL NOT BE REPRODUCED OR DISTRIBUTED TO OTHERS, AND THAT THE INFORMATION CONTAINED THEREIN WILL NOT BE USED IN ANY MANNER DETRIMENTAL TO ICONN SYSTEMS.

SIZE B	DO NOT SCALE THIS DRAWING	DRAWING SCALE: 1:1
------------------	---------------------------	------------------------------

DRAWING TITLE:
IMATE 23 PANEL RECEPTACLE SALES OPTIONS

DRAWING NUMBER: IMATE 23 PANEL RECEPTACLE TEMPLATE	REV. A
DRAWING TYPE: SALES	SHEET: 1 OF 1

WIRING TABLE LEGEND:
N/T = NOT TERMINATED, N/C = NO CONTACT, M/C = MOLDED CLOSED