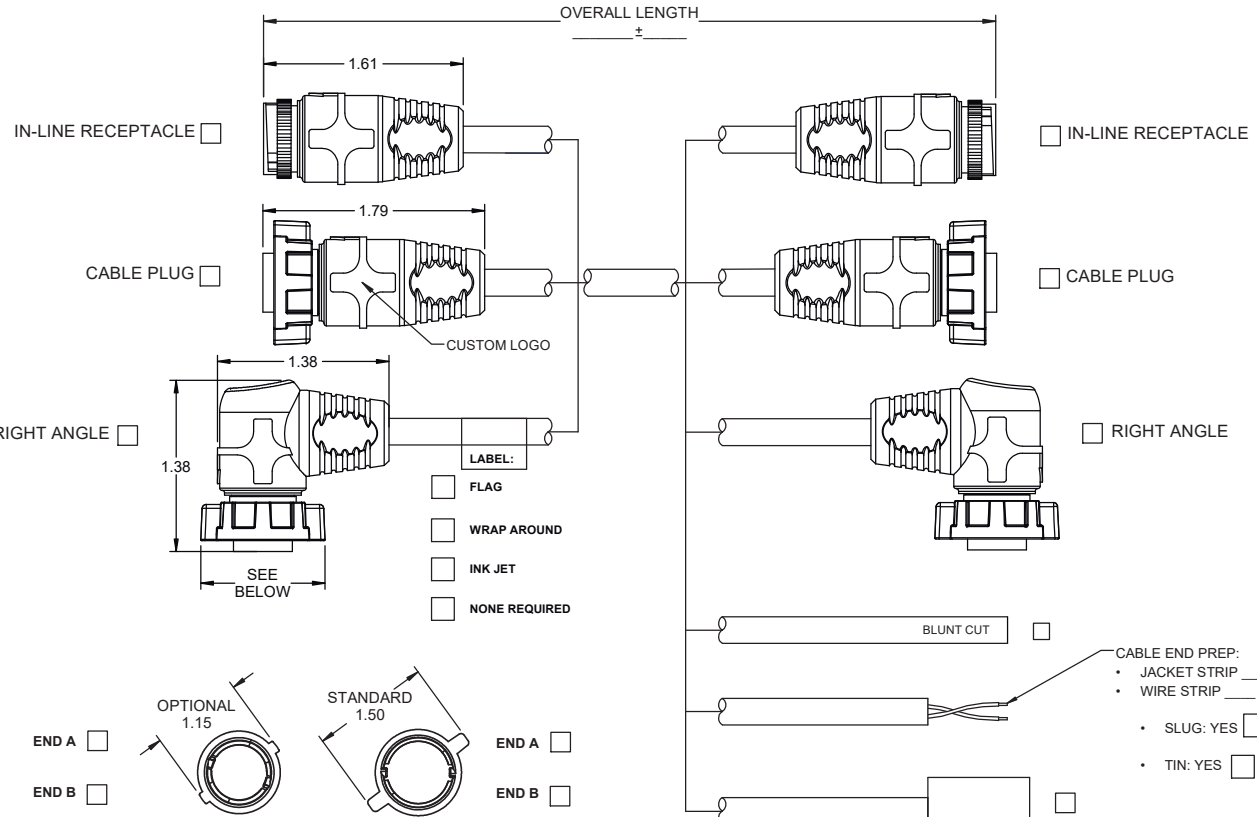
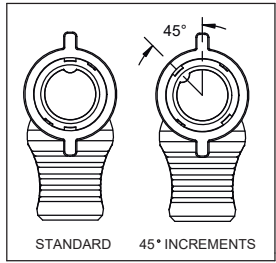


A B C D E F G H I J

STANDARD TOLERANCES	
OVERALL LENGTH	TOLERANCE
< 6"	+/- .25"
6" - 11"	+/- .50"
11" - 23"	+/- 1"
2.00' - 7.99'	+/- 2"
8.00' - 10.99'	+/- 3"
11.00' - 19.99'	+/- 4"
20.00' - 25.99'	+/- 6"
26.00' - 50.99'	+/- 8"
51.00' - 75.99'	+/- 10"
76.00' - 100.00'	+/- 12"
> 100.00'	+/- 1%

NOTE: TIGHTER TOLERANCES MAY REQUIRE SPECIAL FIXTURING AT ADDITIONAL COST

RIGHT ANGLE KEY ORIENTATION (FACE VIEW)



- LABEL:
- FLAG
- WRAP AROUND
- INK JET
- NONE REQUIRED

- CABLE END PREP:
- JACKET STRIP \_\_\_\_\_ ±
  - WIRE STRIP \_\_\_\_\_ ±
  - SLUG: YES  NO
  - TIN: YES  NO

SECONDARY INTERCONNECTION	
MFG	P/N

CABLE SPECIFICATION	
CABLE MFG / PART #:	
FILL OUT BELOW IF NO CABLE MFG OR PART #:	
JACKET COLOR:	
JACKET MATERIAL:	
CONDUCTOR SIZE:	
STRANDING:	
TINNED/BARE:	
# OF CONDUCTORS:	
CONDUCTOR INSULATION:	
SHIELD:	
DRAIN:	
VOLTS:	
UL:	
CSA:	
OTHER:	

SPECIAL REQUIREMENTS / LABEL INFO:	
OVERMOLD:	
OVERMOLD MATERIAL:	I.P. RATING: _____
OVERMOLD COLOR:	UV RESIST: - YES / NO
PACKAGING SPECS:	
1. IF LENGTH IS < 3FT. CABLE IS BUNDLED	
2. IF LENGTH IS > 3FT. CABLE IS COILED WITH I.D. =5" (UNLESS OTHERWISE SPECIFIED)	
3. MISC:	

ALL DIMENSIONS ARE SPECIFIED IN:  
IN [MM]

TOLERANCES UNLESS OTHERWISE SPECIFIED:  
ENGLISH XX = ±0.02 IN XXX = ±0.10 IN METRIC X = ± 2 MM XX = ± 10 MM

FRACTIONAL = ±1/64" ALL ANGLES = ±5°

THIRD ANGLE PROJECTION

**CONFIDENTIALITY NOTICE**

THIS DRAWING CONTAINS CONFIDENTIAL INFORMATION AND IS SUPPLIED BY ICONN SYSTEMS, LLC. THE OWNER OF SUCH INFORMATION, IN ACCEPTING THIS DRAWING, THE USER AGREES THAT IT IS FOR THE USER'S SOLE USE, THAT IT WILL NOT BE REPRODUCED OR DISTRIBUTED TO OTHERS, AND THAT THE INFORMATION CONTAINED THEREIN WILL NOT BE USED IN ANY MANNER DETRIMENTAL TO ICONN SYSTEMS.

DESIGNED BY:	M. CORTESE	DATE:	02-01-22
DESIGN APPROVED BY:	R. SMITH	DATE:	03-11-22
DRAFTED BY:	M. CORTESE	DATE:	02-01-22
CHECKED BY:	R. SMITH	DATE:	03-11-22

1110 N. GARFIELD ST. LOMBARD, IL 60148  
TEL: (630) 927-6000 FAX: (630) 927-6006  
ICONNSYSTEMS.COM

DRAWING TITLE: **IMATE 36 SALES OPTIONS**

DRAWING NUMBER: **IMATE 36 TEMPLATE**

DRAWING TYPE: SALES SHEET: 1 OF 2

REV. **A**

WIRING TABLE LEGEND:  
N/T = NOT TERMINATED, N/C = NO CONTACT, M/C = MOLDED CLOSED

# PLUG FACE VIEWS \*

2	12 AWG CONTACTS	7 POLE (PIN / SOCKET)	
	END A/B		
	PIN/SOCKET		
3	16 AWG CONTACTS	10 POLE (PIN / SOCKET)	12 POLE (PIN / SOCKET)
	END A/B		
	PIN/SOCKET		
4	20 AWG CONTACTS	18 POLE (PIN / SOCKET)	20 POLE (PIN / SOCKET)
	END A/B		
	PIN/SOCKET		
5	22 AWG CONTACTS	24 POLE (SOCKET ONLY)	
	END A/B		
	PIN/SOCKET		

\*NOTE - INLINE PINOUTS ARE MIRRORED

- ACCESSORIES / COLORS:**
- SEALING CAP/COVER
  - SECONDARY SEAL (INLINE ONLY)
  - TERMINATOR PLUG (NO CABLE)
  - COUPLING RING COLORS:
    - BLACK (STANDARD)
    - BLUE
    - RED
    - GREY

**CONNECTOR CHECKLIST:**  
**PAGE 1**

- END A STYLE SELECTION
- END B STYLE SELECTION
- LABEL
- STRIP/TIN/SLUG
- OTHER INTERCONNECT
- COUPLING RING STYLE
- CABLE SPECIFICATIONS
- OVERMOLD MATERIAL / COLOR / UV

**PAGE 2**

- END A PINOUT
- END A GENDER
- END B PINOUT (IF APPLICABLE)
- END B GENDER (IF APPLICABLE)
- WIRING TABLE
- ACCESSORIES/COLORS

WIRE COLOR CODE END "A"

1	2	3	4	5	6	7	8	9	10	11	12
13	14	15	16	17	18	19	20	21	22	23	24

WIRE COLOR CODE END "B"

1	2	3	4	5	6	7	8	9	10	11	12
13	14	15	16	17	18	19	20	21	22	23	24

WIRING TABLE LEGEND:  
N/T = NOT TERMINATED, N/C = NO CONTACT, M/C = MOLDED CLOSED

ALL DIMENSIONS ARE SPECIFIED IN: IN [MM] TOLERANCES UNLESS OTHERWISE SPECIFIED: ENGLISH XX = ±0.02 IN XXX = ±0.10 IN METRIC X = ± 0.2 MM XX = ± 0.10 MM FRACTIONAL = ±1/64" ALL ANGLES = ±5° THIRD ANGLE PROJECTION	DESIGNED BY: M. CORTESE DATE: 02-01-22	1110 N. GARFIELD ST. LOMBARD, IL 60148 TEL: (630) 927-6000 FAX: (630) 927-6006 ICONNSYSTEMS.COM
	DESIGN APPROVED BY: R. SMITH DATE: 03-11-22	
<b>CONFIDENTIALITY NOTICE</b> THIS DRAWING CONTAINS CONFIDENTIAL INFORMATION AND IS SUPPLIED BY ICONN SYSTEMS, LLC. THE OWNER OF SUCH INFORMATION, IN ACCEPTING THIS DRAWING, THE USER AGREES THAT IT IS FOR THE USER'S SOLE USE. THAT IT WILL NOT BE REPRODUCED OR DISTRIBUTED TO OTHERS, AND THAT THE INFORMATION CONTAINED THEREIN WILL NOT BE USED IN ANY MANNER DETRIMENTAL TO ICONN SYSTEMS.	DRAFTED BY: M. CORTESE DATE: 02-01-22	DRAWING NUMBER: <b>IMATE 36 TEMPLATE</b>
	CHECKED BY: R. SMITH DATE: 03-11-22	SIZE: <b>B</b> DO NOT SCALE THIS DRAWING
DRAWING SCALE: <b>2:1</b>		DRAWING TYPE: SALES SHEET: 2 OF 2